

MYRAID[®]

ENGINEERS LLP

Leakage Techno Solutions

Manufacturer of Mechanical Seals & Spares



MYRAID ENGINEERS LLP

www.myriadengineers.com

- PUMP
- AGITATOR
- ROTRY JOINT
- COMPRESSOR
- PHARMA
- REACTOR
- FERTILIZERS
- CHEMICAL

MYRAID ENGINEERS , manufacture and supply complete range of standard and engineered mechanical seals, Pumps, & Mechanical Seals Spares to our customers. These seals are widely demanded in various industries such as petrochemical industry, oil & refinery industry, sewage treatment plants, oil & gas, Chemical, Pharmaceutical and other related industries. we manufacture these seals as per the exact specifications and requirements of our clients, in efficient manner.

SERVICES OFFERED : Offer all types of mechanical seal & seal support systems.

Offer mechanical seals for all critical applications in various configurations with suitable API plans.

Offer mechanical seal refurbishment services.

MATERIALS:

Face : M.Carbon, R.Carbon, Ceramic, TC, SSiC, RBSiC

Metal : SS316, SS304, SS316L, Hastalloy-C, Super Duplex, Alloy-20

OTHER SIZE AND MATERIALS CAN BE OFFERED ON REQUEST.

OUR AIM IS NOT ONLY TO DEAL WITH CUSTOMERS BUT ALSO TO SATISFY THEM.



RUBBER BELLOW SEAL

ME-31

• Inside Mounted, Rubber Bellow

Shaft Diameter : 10 to 100 mm

Pressure : 13 Bars(max)

Temperature : -20 to +100°C

Velocity : Up to 10 m/sec / 1450 r.p.m.

Seal Ring Face : Carbon, SiC & T.C

Seat Face : Ceramic, SiC & T.C

Elastomer : Viton, Neoprene, EPDM, NBR and Buna-N

MOC : SS 316 / SS 304

Application : Water Pumps, Submersible & Sewage Pumps.



ME-32

• Inside Mounted, Rubber Bellow

Shaft Diameter : 10 to 100 mm

Pressure : 13 Bars(max)

Temperature : -20 to +100°C

Velocity : Up to 10 m/sec / 1450 r.p.m.

Seal Ring Face : Carbon, SiC & T.C

Seat Face : Ceramic, SiC & T.C

Elastomer : Viton, Neoprene, EPDM, NBR and Buna-N

MOC : SS 316 / SS 304

Application : Water Pumps.



ME-33

• Inside Mounted, Rubber Bellow

Shaft Diameter : 12 to 75 mm

Pressure : 10 Bars(max)

Temperature : -20 to +100°C

Velocity : Up to 20 m/sec / 3000 r.p.m.

Seal Ring Face : Carbon, SiC & T.C

Seat Face : Ceramic, SiC & T.C

Elastomer : Viton, Neoprene, EPDM, NBR and Buna-N

MOC : SS 316 / SS 304

Application : Water Pumps, Submersible pumps & Hot Oil Pumps





- **Multi Spring, Balance, Externally Mounted**

Shaft Diameter : 16 to 70 mm

Pressure : 8 Bars(max)

Temperature : Up to 120°C

Velocity : Up to 20 m/sec / 3000 r.p.m

Seal Ring Face : Carbon, SiC & GFT

Seat Face : Ceramic & SiC

Elastomer : Viton, EPDM, TTV, FEP & FFKM

MOC : SS 316 / SS 304

Application : Chemical & Hot Oil Pumps

- **Multi Spring, Balance with Clamp, For Non Metallic Pump**

Shaft Diameter : 16 to 70 mm

Pressure : 8 Bars(max)

Temperature : Up to 120°C

Velocity : Up to 20 m/sec / 3000 r.p.m

Seal Ring Face : Carbon, SiC & GFT

Seat Face : Ceramic & SiC

Elastomer : Viton, EPDM, TTV, FEP & FFKM

MOC : SS 316 / SS 304

Application : Chemical & Hot Oil Pumps



- **Conical Spring, Single Inside Mounted, Unbalanced**

Shaft Diameter : 12 to 90mm

Pressure : 10 Bars(max)

Temperature : -20 to +180°C

Velocity : Up to 20 m/sec / 3000 r.p.m.

Seal Ring Face : Carbon, SiC & T.C

Seat Face : Ceramic, SiC & T.C

Elastomer : Viton, Neoprene, EPDM, NBR

MOC : SS 316/ SS 304

Application : Water Pumps, Circulating Pumps for Central Heating.
Chemical Pumps, Sewage & Submersible Pumps.



● **Single Spring, Single Inside Mounted, Unbalanced**

Shaft Diameter : 14 to 120 mm

Pressure : 8 Bars(max)

Temperature : -23 to +180°C

Velocity : Up to 20 m/sec / 3000 r.p.m.

Seal Ring Face : Ceramic, SiC & T.C

Seat Face : Ceramic & SiC

Elastomer : Viton, PTFE, TTV, EPDME, NBR

MOC : SS 316 / SS 304

Application : Water Pumps, Clear Chemicals,

ME - 43B

● **Multi Spring, Single Inside Mounted, Balanced**

Shaft Diameter : 16 to 100 mm

Pressure : 35 Bars(max)

Temperature : -40 to +180°C

Velocity : Up to 20 m/sec/3000 r.p.m.

Seal Ring Face : Carbon, SiC & T.C

Seat Face : Ceramic, SiC & T.C

Elastomer : Viton, PTFE, GFT, TTV, EPD, NBR, FFKM

MOC : SS 316 / SS 304

Application : Petrochemicals, Refineries, General Chemicals & & Light Hydrocarbon.



ME- 43U

● **Multi Spring, Single Inside Mounted, Unbalanced**

Shaft Diameter : 10 to 100mm

Pressure : 10 Bars(max)

Temperature : -20 to +260°C

Velocity : Up to 20 m/sec/3000 r.p.m

Seal Ring Face : Carbon, GFT , SiC & T.C

Seat Face : Ceramic, SiC & T.C

Elastomer : Viton, PTFE, GFT, TTV, EPD, NBR, FFKM

MOC : SS 316/ SS 304

Application : Water Pumps, Circulating Pumps for Central Heating.
Chemical Pumps, Sewage& Submersible Pumps.





● **Single Spring Seal, Unbalanced Independent of direction of rotation.**

Shaft Diameter : 12 to 100mm

Pressure : 10 Bars(max)

Temperature : -60 to +200°C

Velocity : Up to 20 m/sec / 3000 r.p.m

Seal Ring Face : Carbon, GFT, SiC & T.C

Seat Face : Ceramic, SiC & T.C

Elastomer : Viton, PTFE, GFT, TTV, EPDM, NBR, FFKM

MOC : SS 316 / SS 304

Application : Petrochemical Industry, Chemical Industry, Process Industry, Chemical Standard Pump, Vertical Screw Pump

ME- 48

● **Wave / Multi Spring, Single Inside Mounted, Balanced**

Shaft Diameter : 18 to 100 mm

Pressure : 60 Bars(max)

Temperature : -45 to +180°C

Velocity : Up to 20 m/sec / 3000 r.p.m

Seal Ring Face : Carbon, SiC & T.C

Seat Face : Ceramic, SiC & T.C

Elastomer : Viton, PTFE, TTN, EPDM, NBR

MOC : SS 316/ SS 304

Application : Light Abrasive Slurry, Light Sewage Water, High Viscosity Fluids, General and Light Chemicals & Hydrocarbons.



ME- 47



● **Multi Spring, Single Inside Mounted, Balanced**

Shaft Diameter : 1" to 4.5"

Pressure : 25 Bars(max)

Temperature : -20 to +180°C

Velocity : Up to 20 m/sec/3000 r.p.m

Seal Ring Face : Carbon, SiC & T.C

Seat Face : Ceramic, SiC & T.C

Elastomer : Viton, PTFE, TTN, EPDM, NBR

MOC : SS 316/ SS 304

Application : Food Industry, Sugar Industry, Water Treatment & Media Containing Slurry. Chemical Industry, Mining Industry, Water Treatment

METAL BELLOW SEAL**ME- MB 001**

- **Inside Mounted, Balanced, Metal Bellow with Graphite Packing for High Temperature**

Shaft Diameter : 19 to 100 mm

Pressure : 18 Bars(max)

Temperature : -20 to +350°C

Velocity : Up to 20 m/sec/3000 r.p.m.

Seal Ring Face : Carbon, SiC & T.C

Seat Face : SiC & T.C

Elastomer : Viton, PTFE, FEP, EPDM, FFKM

MOC : SS 316 / SS 304, Hast-C

Application : Chemicals, Petrochemicals & Petroleum Refineries, Hot Oil.

ME- MB 002

- **Inside Mounted, Balanced, Metal Bellow with Graphite Packing) for High Temperature**

Shaft Diameter : 19 to 100 mm

Pressure : 18 Bars(max)

Temperature : -20 to +350°C

Velocity : Up to 20 m/sec/3000 r.p.m.

Seal Ring Face : Carbon, SiC & T.C

Seat Face : SiC & T.C

Elastomer : Viton, PTFE, FEP, EPDM, FFKM

MOC : SS 316 / SS 304, Hast-c

Application : Chemicals, Petrochemicals & Petroleum Refineries, Hot Oil.

**ME-MB 003**

- **Inside Mounted, Rotating Bellows, Balanced Independent of Direction of Rotation, Roller Bellows**

Shaft Diameter : 19 mm to 100 mm

Pressure : 16 Bars(max)

Temperature : -40 to +220°C

Velocity : Up to 20 m/sec

Seal Ring Face : Carbon, SiC & T.C

Seat Face : SiC & T.C

Elastomer : Viton, PTFE, FEP, EPDM, FFKM

MOC : SS 316 / SS 304, Hast-c

Application : Process industry, Oil & gas industry, Chemical Industry, Pharmaceutical industry, Pulp & Paper industry, Food & beverage Industry.



PTFE BELLOW SEAL

ME-51

● PTFE Bellow Replaceble

Replaceable Face : GFT, CFT, SiFT

Shaft Diameter : 18 to 100 mm

Pressure : 8 Bars(max)

Temperature : -45 to +160°C

Velocity : Up to 20 m/sec / 3000 r.p.m.

Seal Ring Face : GFT, CFT & SiC

Seat Face : Ceramic & SiC.

Elastomer : PTFE & GFT

MOC : SS 316 / SS 304

Application : Extremely Corrosive Chemical.



RUBBER BELLOW SEAL

ME-52

● PTFE Bellow Seal

Non Replaceable Face : GFT & CFT

Shaft Diameter : 18 to 100 mm

Temperature : 8 Bars(max)

Velocity : -45 to +160°C

Seal Ring Face : GFT, CFT & SiC

Seat Face : Ceramic & SiC.

Elastomer : PTFE & GFT

MOC : SS 316 / SS 304

Application :Extremely Corrosive Chemical. WY,



CARTRIDGE SEALS

ME-63

● Cartridge, Inside Mounted, Unbalanced, Single Seal)

Size : 25mm to 100mm / 1" to 4"

Pressure : 10 Bars(max)

Temperature : -20 to +180°C

Velocity : Up to 20 m/s / 3000 r.p.m.

Seal Ring Face : Carbon, T.C & SiC

Seat Face : SiC. & T.C.

Elastomer : Viton, TTV, PTFE, FEP & FFKM

MOC : SS 316 / SS 304 & Hast-C

Application : Pulp Pumps, Sludge Pumps, Syrup Pumps & Slurry Pumps.





- **Cartridge, Inside Mounted, Inherently Balanced, Single Seal**

Size : 25mm to 100mm / 1" to 4"

Pressure : 25 Bars(max)

Temperature : -20 to +350°C

Velocity : Up to 20 m/s / 3000 r.p.m.

Seal Ring Face : Carbon, T.C & SiC

Seat Face : SiC. & T.C.

Elastomer : Viton, TTV, PTFE, FEP & FFKM

MOC : SS 316 / SS 304 & Hast-C

Application : Pulp Pumps, Sludge Pumps, Syrup Pumps & Slurry Pumps.

- **Semi-Cartridge, Inside Mounted, Single Seal**

Size : 25mm to 80mm / 1" to 3"

Pressure : 07 Bars(max)

Temperature : -30 to +260°C

Velocity : Up to 20 m/s / 3000 r.p.m.

Seal Ring Face : GFT, CFT & SiC

Seat Face : SiC. & T.C.

Elastomer : Viton, TTV, PTFE, FEP & FFKM

MOC : SS 316 / SS 304 & Hast-C

Application : Pulp Pumps, Sludge Pumps, Syrup Pumps & Slurry Pumps. ME.61D



REACTOR SEALS



- **Dry Seal**

Size : 20 to 150mm

Pressure : Vac to 8 Bars (max)

Temperature : Ambient to +130°C

Velocity : Up to 320 RPM

Seal Ring Face : Carbon & SiC

Seat Face : SiC. & T.C.

Elastomer : Viton, TTV, FEP & FFKM

MOC : SS 316/ SS 304

Application : Food Products, Pharmaceutical Products, Mixers & Agitators.



● Dry Seal with Bearing

Size : 20 to 150mm

Pressure : Vac to 8 Bars(max)

Temperature : Ambient to +130°C

Velocity : Up to 320 RPM

Seal Ring Face : Carbon & SiC

Seat Face : SiC. & T.C.

Elastomer : Viton, TTV, FEP & FFKM

MOC : SS 316/ SS 304

Application : Food Products, Pharmaceutical Products, Mixers & Agitators.

ME-430 D

● Double Balanced Seal

Size : 25 to 150mm

Pressure : Vac to 40 Bars(max)

Temperature : Ambient to +200°C

Velocity : Up to 300 RPM

Barrier Fluid Pressure : Vessel Pressure + 1.5 Bar

Seal Ring Face : Carbon & SiC

Seat Face : SiC. & T.C.

Elastomer : Viton, TTV, FEP & FFKM

MOC : SS 316 / SS 304

Application : Petrochemicals, General Chemicals,
Light Hydrocarbons Emitting Vapour & Pharma Industry



ME-410

● Wet Seal with Bearing

Size : 25 to 150mm

Pressure : Vac to 8 Bars(max)

Temperature : Ambient to +180°C

Velocity : Up to 320 RPM

Seal Ring Face : Carbon & SiC

Seat Face : SiC. & T.C.

Elastomer : Viton, TTV, FEP & FFKM

MOC : SS 316/ SS 304

Application : Corrosive Chemicals, Hydrocarbons,
General & light Chemical, Mixers & Agitators.



● METAL OIL SEAL

Size : 12 to 60 mm

Temperature : 120°C

Velocity : 3000 r.p.m.

Elastomer : Viton, PTFE & CFT

MOC : SS 316/ SS 304

Application : Petrochemical & General Chemical



● THERMOSYPHON POT

Thermosyphon Pot offered find application in pressurizing of double and tandem mechanical seals and comes equipped with necessary connections as well as fittings to match up with the end application demands post installation stage. Here, our expertise lies in also supplying these with provision of refill unit that assists in maintaining buffer fluid level during involved operations without bringing any noticeable disturbance in the involved ongoing process.

● APPLICATIONS

Thermosyphon seal pots can be supplied as per API 610 specifications
Designs based on permissible working values (depending upon actual conditions of services)
Guide lines with buffer fluid water of 60°C and cooling water of 20°C
Comes with limit values as per ASME Section VIII calculations
Provides for high pressure sealing support

PRODUCT SPECIFICATIONS:

Capacity : 7 & 9 litres

Material : SS

Empty Weight : 32 (kg/cm)



All Types of Rotary Joint, Rotary Union & Roto Seal Couplings.

Rotary Joint Water Application

Face Materials	Carbon, Silicon Carbide, Tungsten Carbide, Stellite
Metal Parts	SS 316, SS 304, Brass
Seal Elastomer	Viton, Silicon, TTV, PTFE.
Operating Limits	SIZE : 3/8" To 6.0" Pressure : 15 Bar temperature : 150° C Speed: 3500 RPM



Rotary Joint for Air Application

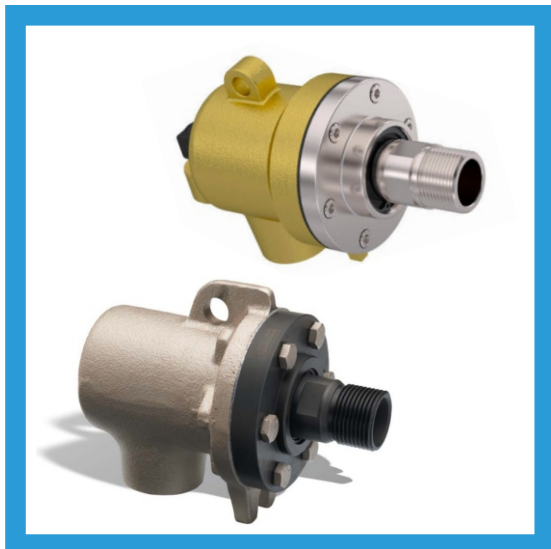
Face Materials	Carbon, Silicon Carbide, Tungsten Carbide, Stellite,
Metal Parts	Aluminium
Seal Elastomer	Viton, PTFE.
Operating Limits	SIZE : 3/8" To 6.0" Pressure : 10 Bar Air, 0.07 Bar to 7 Kpa Vaccum Temperature : 150° C Speed: 2800 RPM



All Types of Rotary Joint, Rotary Union & Roto Seal Couplings.

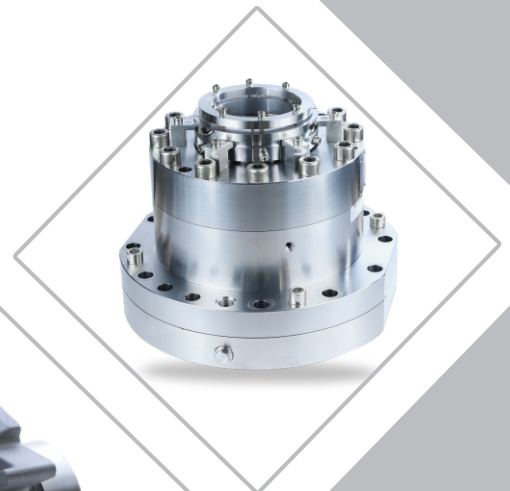
Hydraulic Rotary Joint

Metal Parts	SS 316, SS 304, Brass, Gun Metal.
Seal Elastomer	Viton, PTFE.
Operating Limits	SIZE : 3/8" To 6.0" Pressure : 400 Bar temperature : 150° C Speed: 1500 RPM



Rotary Joint for Hot Oil & Thermic Fluid

Face Materials	Antimony Carbon.
Metal Parts	MS, SS 304
Seal Elastomer	Grafoil Gasket, Asbestos Gasket.
Operating Limits	SIZE : 0.5" to 6.0" Pressure : 07 Bar Temperature : 350° C Speed: 750 RPM



Email : Info@myriadengineers.com
web : myriadengineers.com

☎ 9004340707
☎ 9820304776

📍 No. 803, Patel State Raod,
Near Station, Jogeshwari (W),
Mumbai - 400 102.